

## **E-marine – Company Profile**

Turnkey Solutions for Submarine Cables





## CONTENTS

CEO's Message

About Us

Our Services

Our Resources

Successful Project List

E-marine Major Clients

Contact Address



*“We have been in the field of Subsea cabling for more than three decades now, providing services to our friends, colleagues & business associates in the industry at regional & international levels. Our aim is to continue such robust efforts through enhanced technology, cost effective solutions and permanent local support”.*

**Omar Jassim Bin Kalban**  
**Chief Executive Officer**  
**E-marine**



## About Us

E-marine is the trusted principal provider of submarine cable solutions in the Middle East. It was incorporated in early 1984. It has over three decades of subsea cable experience in the region and was born out of a need to serve the region from the region. It has become the growth engine that helps to facilitate the communications infrastructure in the Middle East and makes a major contribution to the advancement of the region. E-marine's total commitment for quality is evidenced with the obtainment of an integrated Quality, Health, Safety and Environment Management System. It is certified to ISM Code, ISO 9001, ISO 14001 and ISO 45001.



## Our Services

### 1- Marine Route Survey Services

E-marine Offers survey services to regional and international clients using the latest technology and equipment.

### 2- Submarine Cable Installation, Repair & Maintenance

E-marine showcases strong presence in the market in maintaining various submarine cable systems and also installing power cables across various oil field platforms.

### 3- Marine Project Management

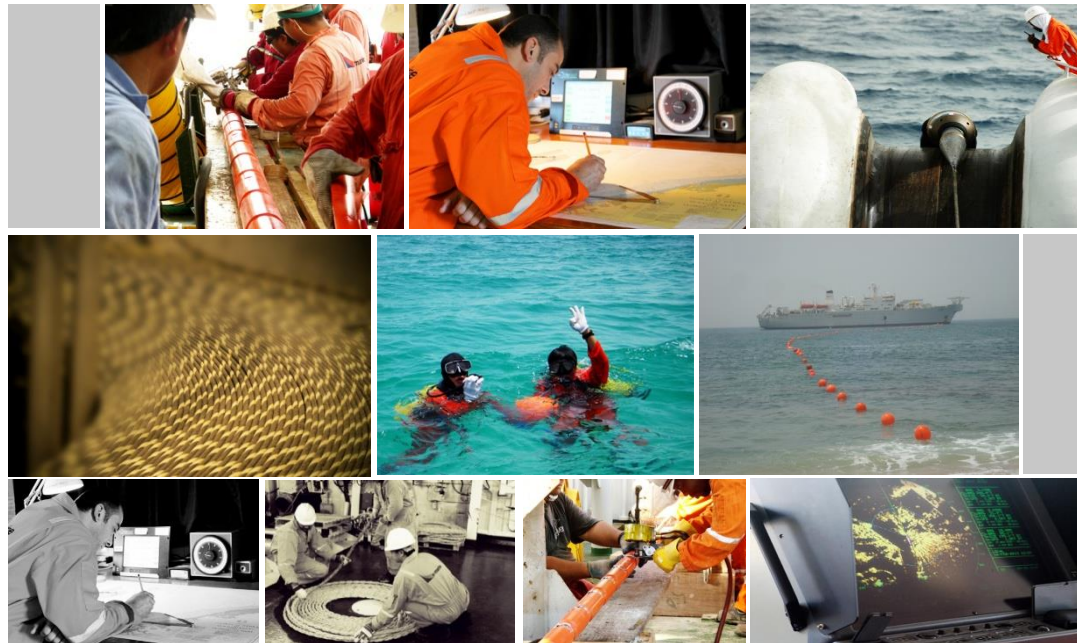
E-marine employs innovative management solutions to achieve safe, efficient and successful completion of projects.

### 4- Cable Freight Services & Storage

Cable depots at E-marine are equipped with testing and jointing professionals that provide storage facilities for submarine cable and accessories in accordance to the highest international standards.

### 5- Vessel Chartering & Logistical Support

E-marine provides vessel chartering services and assists in finding efficient solutions for technical challenges.





## Our Vessels

E-marine's fleet consists of four fully equipped Cable ships, one multi purpose vessel and one small survey boat with state-of-art facilities.





## 2017 Addition | MPV Athba





## Equipment & Facilities : Vessels & ROVs



### **MPV ATHBA (DP II)**

- Multi-Purpose DP-2, Fi-Fi Vessel: Universal Use- cable ship, platform supply, fire-fighting, marine survey.
- Equipped with work class ROV and cable machinery.
- Huge clear deck space: 1000 m.sq.
- Space for accommodating 58 people.
- Has an on board hospital.
- Load Capacity: 2500 tons
- Speed of upto 14.3 knots
- 30 day endurance.
- Survey vessel capabilities



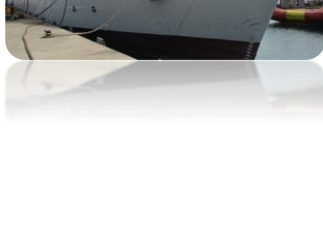


### C.S MARAM (DP II)

Cable Ship Maram is the latest addition to our fleet. It is a large cable ship and CS Maram is the most modern, 'GreenPlus' eco-friendly cable ship in the world, *ever built*.

- Equipped with DP II and Cable Management Systems.
- Gross tonnage of 8,179 tons.
- Cable uplift capacity of ~ 3000 tons.
- Accommodation Capacity for 72 persons.
- 5-Star facilities conforming to SPS 2008, a class enjoyed by passenger ships
- Speed of up to 15 knots.
- Endurance at sea 60 days.
- The vessel is equipped with the latest high-tech ROV (Remotely Operated Vehicle-QT 400) that will enable the vessel to undertake inspections and surveys of the seabed up-to 2500m water depth and cut trenches to bury the cable up-to 2m below the sea-bed.
- Sea plough with 2.2m burial capability (extendable to 3m with share extension)





### C.S NIWA- DPII

The C.S NIWA- DPIIA is a large cable ship with working class ROV's (Remotely operate vehicles), equipped with:

- Dynamic Positioning and cable management systems.
- Working class ROV.
- Fully covered operational area.
- Gross tonnage of 13201 tons.
- Cable uplift capacity of 6098 tons.
- Accommodation capacity of 138 persons.
- Speed of up to 14 knots .
- 60 day endurance.
- Sea plough with 2m burial capability.



### C.S UMM AL ANBER

The cable ship UMM AL ANBER, also classified as a cable layer is equipped with:

- Dynamic Positioning and cable management systems.
- Working class ROV.
- Supported by submarine cameras & scanning sonar.
- Gross tonnage of 7750 tons.
- Cable uplift capacity of 3550 tons.
- Speed of up to 12 knots.
- 40 day endurance .



### **C.S ETISALAT**

Cable ship ETISALAT is a medium sized C.S designed to operate on shallow waters. It is equipped with:

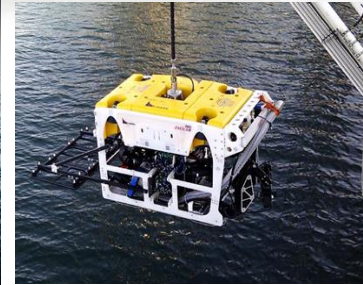
- Dynamic positioning & Survey systems for deep and shallow waters
- Classified as DP CABLE LAYER by Lloyds
- Gross tonnage of 2221 tons
- Cable uplift capacity ~758 tons
- Speed of up to 12 knots
- 35 day endurance



### **Survey Boat ZAAM**

ZAAM is a shallow water survey boat. It is equipped with:

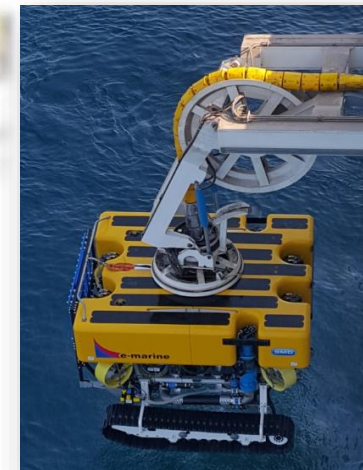
- Survey systems for shallow waters.
- Classified by Tasneef as a Survey Boat
- Speed: 40 knots
- Powered by twin Cummins 600 bhp engines



## Our Resources

### Equipment | Remotely Operated Vehicles

- NAVAJO
- ATOM
- Olympian T2
- CMROV 280
- Q-Trencher 400 CMROV
- Q-Trencher 500
- FCV 600





## Our Resources

### Depots

E-marine has two Cable Depots – One in Hamriyah Free Zone, Sharjah-UAE and the other in port of Salalah-Oman, provides sophisticated storage facilities for submarine cable and accessories in controlled environment and in accordance with highest international standard along with testing and jointing by qualified technicians.



Hamriyah Depot



Salalah Depot

#### HAMRIYAH DEPOT

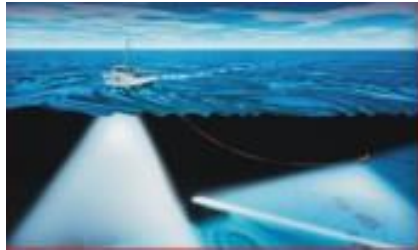
The Cable Depot is strategically located in Hamriyah Free Zone, Sharjah, UAE. The depot not only has a huge capacity for repeaters and spares but is also well equipped with laboratory and fiber optics workshop, forklifts, hauling machines and ancillary equipment.

Built In Area	:2910 sq.m
No. of Tanks	: 9
Diameter / Height of Tanks	:10m/3.5m
Total Cable storage capacity	:2304 cu.m

#### SALALAH DEPOT

This strategic location of cable depot in the port of Salalah enhances E-marine’s services in the Western Indian Ocean, East Africa and the Red Sea. Also it helps reduce the sailing time and allow E-marine to reach the farthest point in the region in a short span of time.

Built In Area	:1980 sq.m
No. of Tanks	: 9
Diameter / Height of Tanks	:7.95m/3m
Diameter / Height of spare tank	:6.33m/2m
Total Cable storage capacity	:1800 cu.m



## MARINE SURVEY SERVICES

As part of its endeavor to provide total solutions to the Client needs, E-Marine is now providing survey services to its valued Clients. A team of professional, highly motivated offshore staff backed by an effective base has resulted in accomplishing successful survey projects.

E-Marine has in its inventory a comprehensive array of survey sensors and equipment for geophysical / hydrographic investigations, from inshore using a single beam bathymetry to full 2D Hi Res geophysical site investigation spreads. Packages are tailored to suit each customer's requirement, thus ensuring quality and relevance of data, always with a view to cost-effectiveness.



- ***Offshore Survey Support Services***
  - Support services for Marine Cable/Pipeline Route Surveys and Platform Site surveys.
- ***Feasibility and Desktop Studies***
  - Landing site identification, assessment and selection
  - Cable route planning and engineering
  - Permitting identification and audits
  - Environmental and social impact assessment
  - Risk identification and assessment
  - Route survey scoping and specifications
- ***Burial Assessment Surveys***
  - Detailed surveys & assessments of the seabed and sub-seabed are a critical prerequisite to the cost-effective design of marine structures and sub-sea installations.
  - Continuous engineering interpretation of geophysical and bathymetric data
  - Geotechnical data from coring and cone penetrometer measurements
  - Information from the desk top study
  - Installation tool performance characteristics



- **ROV positioning Services** for cable crossing, platform inspection, cable and pipeline as-laid inspections.
- **Geophysical / Hydrographic Survey Operations** for depth of rock head, quantification of offshore resources, rig hazard site, pipeline and submarine cable route surveys, seafloor mapping and sediment distribution / movement analysis.
  - Bathymetric charting of sea floor for safety and critical engineering applications.
  - Location and detection of man-made artifacts including debris, shipwrecks, ordnance and sub-sea structures.
  - Profiling of shallow geological features and structures to assist with engineering studies and facility design.
  - Seafloor and sub-surface geotechnical assessment.
  - Location and detection of geo-hazards such as shallow gas, hydrates, unstable sea floors, active geological zones and potential shallow water flow-zones to enable exploration drilling, facilities installation and production operations to be performed safely and efficiently.





**ISO 9001  
ISO 14001  
ISO 45001**

**BUREAU VERITAS  
Certification**



## Quality Health Safety Environmental Management System Assurance

### IMS QHSE | Assurance Certifications

- ISO 22301:2019 BMCS, BVCH SAS certified since 2023
- ISO 14001:2015, EMS certified since 10.07.2002
- ISO 45001:2018, OHSMS certified since 10.07.2002
- ISPS Code 2021, ISSC Certified
- ISO 9001:2015, QMS certified since 01.07.2000
- ISM DOC Code 2020, SMS Code certified since 2000
- ILO MLC 2006 Certified since 2016



## Successful Project List

Year	Project
1990	<ul style="list-style-type: none"> <li>• Etisalat - Submarine Cable Installation project connecting Islands in UAE.</li> </ul>
1992	<ul style="list-style-type: none"> <li>• Etisalat - UAE- Regional submarine Cable Installation.</li> </ul>
1994	<ul style="list-style-type: none"> <li>• Etisalat - Submarine Cable Installation project connecting Islands in UAE.</li> </ul>
1995 - 99	<ul style="list-style-type: none"> <li>• FOG submarine Cable Installation linking the UAE, Qatar, Bahrain and Kuwait.</li> <li>• Etisalat - UAE Domestic network connecting Islands &amp; Offshore platforms.</li> <li>• SMW3 (segment 5) submarine cable installation linking Mumbai, Karachi, Fujairah, Muscat and Djibouti.</li> <li>• FLAG Cable Installation of Jeddah &amp; Aqaba extensions.</li> </ul>
2001	<ul style="list-style-type: none"> <li>• Installation of power cable in Oil field, UAE.</li> </ul>
2003	<ul style="list-style-type: none"> <li>• Etisalat - Reallocation of two Submarine Cable project in Jebel Ali – Dubai (Palm Island).</li> <li>• Installation of power cable in Oil field, UAE.</li> </ul>
2004	<ul style="list-style-type: none"> <li>• Installation of SMW4 (segment 2) network linking Mumbai, Karachi, Fujairah, Jeddah and Suez.</li> <li>• UAE- QATAR Fiber optic link</li> </ul>
2005	<ul style="list-style-type: none"> <li>• TWA – 1 Cable System Installation.</li> <li>• Kuwait Regional Cable System Installation.</li> </ul>
2006	<ul style="list-style-type: none"> <li>• Etisalat - Regional Submarine Cable Installation.</li> <li>• Etisalat - Relocation of three submarine cables in Fujairah, UAE.</li> <li>• Etisalat - Relocation of Submarine Cables between in Jebel Ali – Dubai (Waterfront).</li> </ul>



## Successful Project List

Year	Project
2007	<ul style="list-style-type: none"> <li>• Etisalat - EPC contract for the Installation of Fiber Optic Cables linking between Platforms.</li> <li>• Power Cable Installations in Oil Fields in Qatar.</li> <li>• Submarine Fiber Optic Cable Installation Project in Qatar.</li> <li>• Replacement and Installation of Composite Power Cables in UAE.</li> </ul>
2008	<ul style="list-style-type: none"> <li>• Composite Power Cable and &amp; Fiber Optic Cable Installation linking Platforms in Qatar.</li> <li>• Composite Power Cable Installation Connecting platforms in UAE.</li> <li>• Installation of Fiber Optic Cable Connecting Islands in UAE.</li> </ul>
2009	<ul style="list-style-type: none"> <li>• TEAMS (The East African Marine System) Involved in the Installation of 4900Km Fiber Optic Cable connecting Fujairah, UAE and Mombasa, Kenya.</li> <li>• "LIGHT HOUSE PROJECT" - Fiber Optic Cable Installation of LORI II &amp; STEWS II Submarine Cable System.</li> </ul>
2010	<ul style="list-style-type: none"> <li>• MENA Fiber Optic Cable Installation Project.</li> <li>• Etisalat - Fiber Optic Cable Installation Project Connecting Islands in UAE.</li> </ul>
2011	<ul style="list-style-type: none"> <li>• SAS II (Saudi Arabia - Sudan) Fiber Optic Cable Installation Project.</li> <li>• GBI (Gulf Bridge International) Fiber Optic Cable Installation Project.</li> <li>• Etisalat - Fiber Optic Cable Connecting Islands in UAE.</li> </ul>
2012	<ul style="list-style-type: none"> <li>• Etisalat - Regional Cable Installation Project .</li> <li>• Fiber Optic Cable Installation Project in Iraq.</li> <li>• Etisalat - Installation of Fiber Optic Cable Connecting Islands in UAE.</li> </ul>
2013	<ul style="list-style-type: none"> <li>• EPEG (Fiber Optic Cable Installation Project).</li> <li>• Etisalat - Fiber Optic Cable Installation Project Connecting Islands in UAE.</li> <li>• KNPC – Consulting services for enhancing the Telecommunication Transport from MAB to SEA Island.</li> </ul>
2014	<ul style="list-style-type: none"> <li>• Articulated pipe installation / remedial works for POI cable system.</li> <li>• DP World FOC cable installation project.</li> </ul>
2015	<ul style="list-style-type: none"> <li>• Umm Al Dalkh facilities project for ZADCO via CCTC</li> </ul>



## Successful Project List

Year	Project
2016	<ul style="list-style-type: none"> <li>• Gulf 2 Africa (G2A) Marine Route Survey for Omantel.</li> <li>• TEAMS and UAE-Regional FO submarine link relocation operations(Offshore Fujairah).</li> <li>• Improving MABSEA ISLAND project for KNPC, Kuwait.</li> <li>• SEA-ME-WE-5 Load C Installation in UAE, Oman &amp; Pakistan.</li> <li>• Nationwide Submarine Cable Installation-Ooredoo Maldives.</li> <li>• Marine Installation for AVASSA Project-Comores Islands.</li> <li>• Marine Installation for SACON project.</li> </ul>
2017	<ul style="list-style-type: none"> <li>• AAE-1 Segment Installation.</li> </ul>
2018	<ul style="list-style-type: none"> <li>• MARS Project: Mauritius to Rodrigues Submarine cable installation.</li> <li>• Etisalat- Submarine Cable Installation and civil works project connecting main-lands in UAE.</li> <li>• Etisalat - Relocation works for domestic network.</li> <li>• Vessel charter projects (PSV) with Rawabi Vallianz Offshore Services for Saudi Aramco and Topaz Marine for Dubai Petroleum.</li> </ul>
2019	<ul style="list-style-type: none"> <li>• Etisalat- Relocation works for domestic cables.</li> <li>• WMU Insertion project in Oman.</li> <li>• Etisalat - Desktop study, marine route survey &amp; terrestrial cable route survey for a project in Abu Dhabi.</li> <li>• Vessel charter with N-Sea Services for Saleh oil field in Ras Al Khaimah.</li> <li>• Vessel charter for seismic survey operation in UAE waters.</li> </ul>
2020	<ul style="list-style-type: none"> <li>• Etisalat - Replacement of Submarine composite cables in UAE waters including marine route survey.</li> <li>• Etisalat --New Submarine Fiber Optic Cable Links for UAE Islands</li> <li>• Continuation of vessel charter for seismic survey operation in UAE waters</li> </ul>



## Successful Project List

Year	Project
2021	<ul style="list-style-type: none"> <li>• MSC Project connecting Maldives &amp; Sri-Lanka</li> <li>• PEACE Project in the Arabian Sea, Red Sea and Indian Ocean</li> <li>• AFRICA-1 Project Marine Route Survey</li> <li>• Etisalat - Marine Survey of route connecting islands in UAE waters</li> <li>• Ras Markaz Crude Oil Park Project in Omani Waters</li> </ul>
2022	<ul style="list-style-type: none"> <li>• Ras Markaz Crude Oil Park Project in Omani Waters</li> <li>• Africa- 1 Project Marine Route Survey</li> <li>• PEACE Submarine Cable Installation – Various Segments</li> <li>• 2- Africa Submarine Cable Installation</li> <li>• Etisalat- Relocation of Submarine Cables</li> <li>• Etisalat – Installation of Submarine Cables connecting various islands in UAE Waters</li> <li>• AAE-1 Marine Survey</li> <li>• KLI Project</li> </ul>
2023	<ul style="list-style-type: none"> <li>• Marine Route Survey &amp; Installation operations for rerouting Submarine Fiber Optic Cable offshore Abu Dhabi.</li> <li>• Installation of Kochi-Lakshadweep submarine cable, Offshore India.</li> <li>• 2-Africa submarine cable installation offshore East &amp; West Africa.</li> </ul>

## Major Clients




## Contact Address



### E-marine PJSC, (Head Office)

1st Floor, Jebel Ali Business Center  
(Opposite of Emirates NBD Bank)  
P.O. Box 282727, Jebel Ali,  
**Dubai, U.A.E.**

**Tel :** +971 4 881 4433

**Fax:** +971 4 881 4422

Email: [emarine@emarine.ae](mailto:emarine@emarine.ae)

Lat 25<sup>0</sup> 0.795'N Lon 055<sup>0</sup> 05.404'E